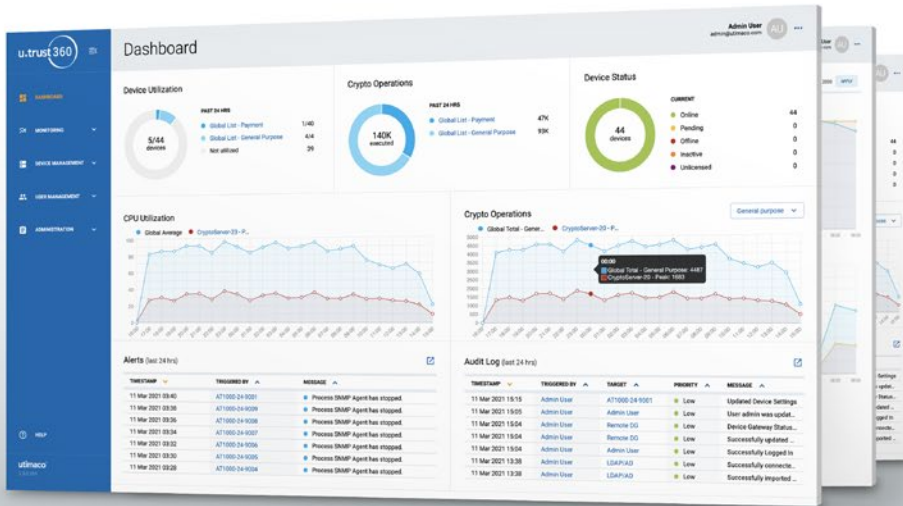


Remote Monitoring and Centralized HSM Management



Fully functional 30-day trial version available at support.hsm.utimaco.com

Monitoring System



UTIMACO
u.trust 360

Platform Availability



UTIMACO
Atalla AT1000



UTIMACO
CryptoServer
LAN V5

The UTIMACO u.trust 360 administration platform empowers you to remotely access the CryptoServer PCIe card, Atalla AT1000, and CryptoServer LAN V5 HSMs for real-time monitoring, configuration and reporting on premise and in the cloud.



u.trust 360 is a unified platform that enables centralized administration, monitoring and provisioning of multiple Atalla AT1000 and CryptoServer Hardware Security Modules (HSMs). Since it ships with an easy to use GUI with natural event and decision flow, HSM administrators can manage hundreds of cryptographic resources more effectively.

u.trust 360 is designed to deliver consistent security policy enforcement, provide transparency and maintain the health of the HSM infrastructure. Because of real-time status updates, compliance reporting and centralized alerts, HSM administrators can address capacity, network and compliance issues timely and seamlessly. With our most recent release we are offering a significant speed boost to the platform with failover architecture. Our new features will help you crack open the “black box” that the HSM once was, and provide useful analytics, reporting, real-time alerts, and much more.

u.trust 360 is available as hardware and software appliance for easy integration into any existing cryptographic environment.



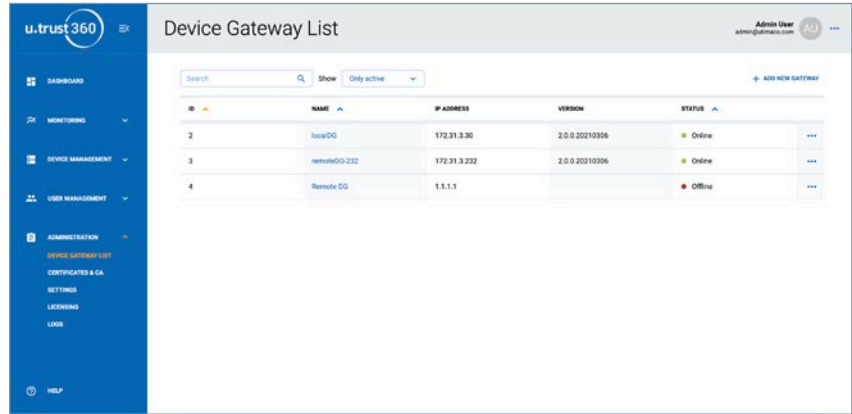
Centralized Monitoring and Management Platform

- Manage and monitor Atalla AT1000 and CryptoServer platform
- Atalla AT1000 and CryptoServer LAN V5 grouping
- Role Based Access Control model (RBAC) for users and HSMs
- Seamless integration with LDAP/AD
- Single pane of glass for management and monitoring
- Real time alerts and status updates
- Bulk onboarding
- Compliance reporting
- Device cloning

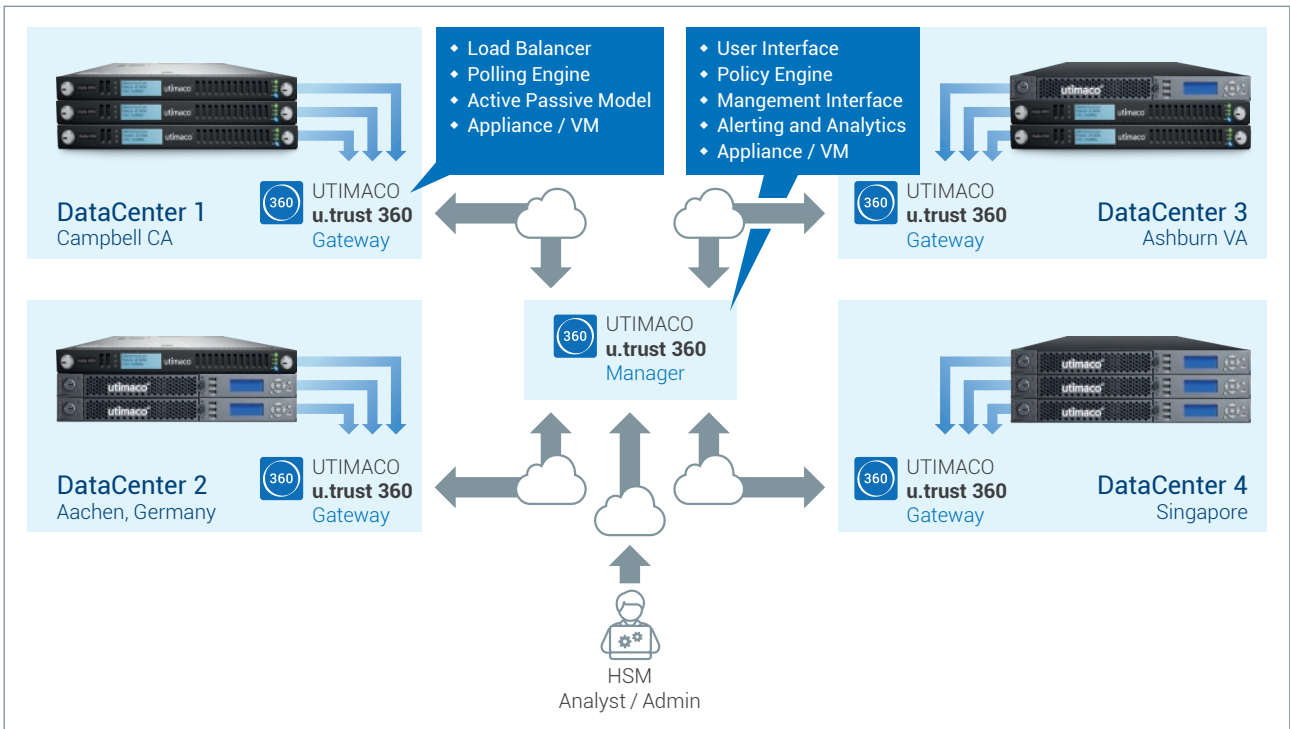
Log Management, Audit Reporting and Backup Repository

- Alerts and notifications
- SMTP and Microsoft Exchange Integration
- Centralized audit
- System logs
- Centralized repository to backup HSM keys and configuration

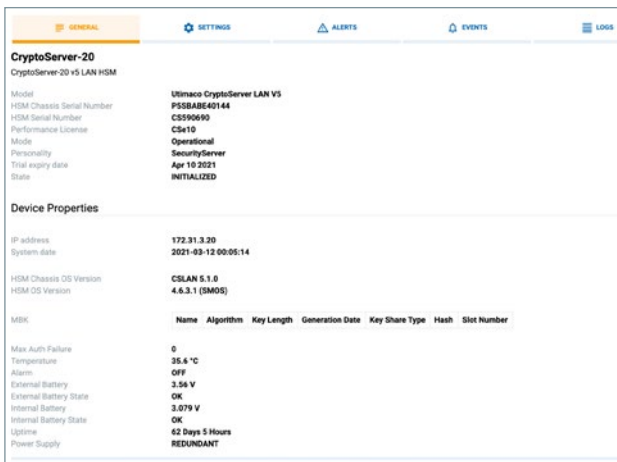
Centrally monitor all your HSMs using a hub and spoke model across multiple datacenters, network segments and locations using the u.trust 360 Device Gateway.



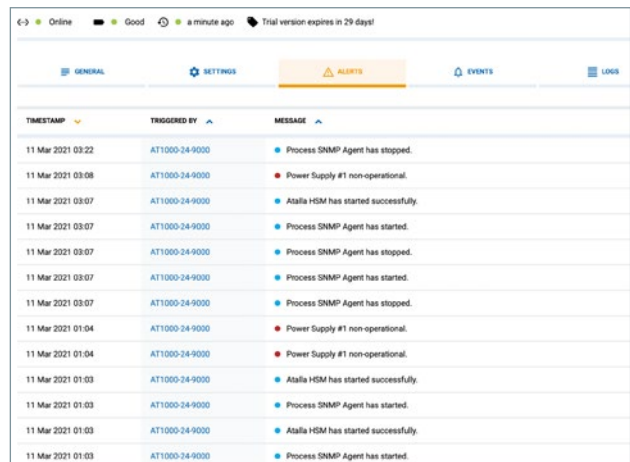
u.trust 360 Device Gateway



u.trust 360 Deployment Model: Hub and Spokes



u.trust 360 Device Management



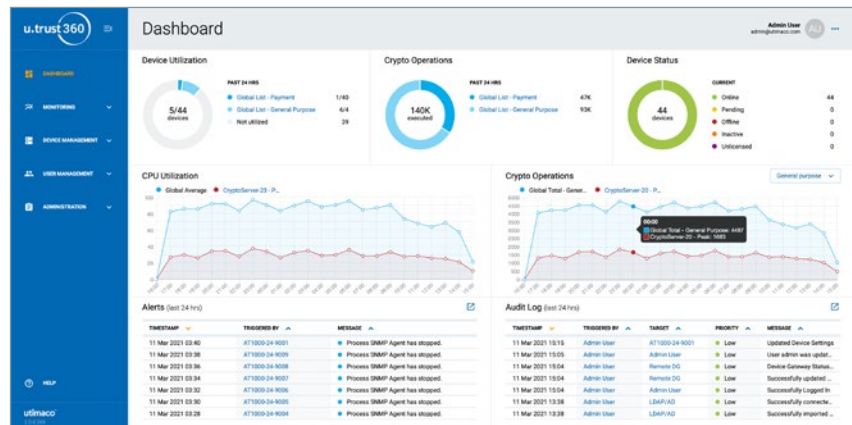
u.trust 360 Proactive monitoring support

A Centralized Dashboard for Your HSMs

Automated and robust, the u.trust 360 dashboard is your HSM command center!

u.trust 360 helps you save time and resources, and improve information security by providing full visibility of your HSM landscape. Its compliance reporting capabilities include real-time status and alerts at the macro and micro levels required within an enterprise.

Simply request details on an individual partition (domain) within an HSM or view the entire estate via a centralized dashboard.



u.trust 360 Dashboard

By investing in a cohesive and centrally managed platform, IT and security teams can become more agile and nimble when adapting to changing requirements and challenges. New services can be rolled out quickly and effectively while data is free to move throughout the enterprise to support business objectives, without compromising security.

Flexible, Modular, and Extensible Deployment Architecture

Provision and de-provision cryptographic resources for HSMs, automate HSM monitoring using RESTful API capabilities and implement a Role Based Access Control Model (RBAC). Multiple stakeholders take part in managing an organization's security. Control of the cryptographic keys is implemented so that HSM Administrators, key custodians, and Security Officers can perform their duties without involving the Application Owners nor impacting application processing, resulting in 100% uptime.

♦ Seamless integration

Easily integrate with your existing Atalla AT1000 and CryptoServer LAN V5 real estate. No dependencies on HSM firmwares.

♦ Enhanced performance

Manage and monitor with no performance impact. In fact, our most recent release offers better performing UI with significant speed improvements.

♦ Identify Performance Bottlenecks

Proactively plan for peak business hours and identify HSM bottlenecks to avoid system or network outages.

♦ Redundant solution – introducing High Availability (HA)

u.trust 360 now has added support for HA – it is no longer a single point of failure.

♦ Easy Expansion

Logically group, monitor and manage hundreds of HSMs using a modular component architecture.

♦ True Remote Management

Login session management and live graphs works seamlessly with your existing remote management solutions for Atalla AT1000 and CryptoServer LAN V5 HSMs. In addition, you are able to monitor the Atalla AT1000 sockets in real time.

♦ HPE Integrity NonStop System Support

Your mission critical workload environment deserves 100% fault tolerance. Now you can get a comprehensive view of your HSMs connected to the HPE Integrity NonStop systems.

u.trust 360 can communicate with a second network interface of HSMs or leverage ASRM (Atalla Secure Resource Manager) running on the HPE NonStop system.

♦ Clear Monitoring

Monitor various HSMs crypto operations as well as failures like PIN, CVV, CVC, MAC to detect and avoid breaches effectively. Monitor the hardware health using Appliance Monitoring System (AMS). Can now monitor up to 100 commands on Atalla AT1000 with top 10, and detailed graphs.

♦ Convenient Customization

Customizable home screen by expanding the existing implementation of tags to widgets.

Automated Monitoring and Reporting

Secure, automated, and unified logging and reporting are essential in maintaining risk and compliance. All u.trust 360 application and configuration changes are recorded and tracked using an authentic and trusted audit trail.

- Around-the-Clock Updates**
 Real time device status updates and consumption reporting using e-mail alerts and device dashboard.
- System Audit Logs**
 Improved security and compliance with detailed audit logs and application insights.
- Role-Based Access Control**
 Customized user groups to implement granular controls of

the HSMs being managed. Import users from LDAP or manage locally.

- Compliance Reporting**
 View, save, print and share detailed compliance reports, based on pre-defined compliance templates verified by external auditors.
- Transaction Monitoring**
 Monitor and identify the bottlenecks with out-of-the box

functionalities that can also be customized to reflect your policy requirements.

- Enhanced Alerts**
 User defined alerting thresholds for CPU, crypto operations and failures.
- Advanced Search**
 Global search to find and group HSMs with similar configuration.

HSM Performance Dashboard

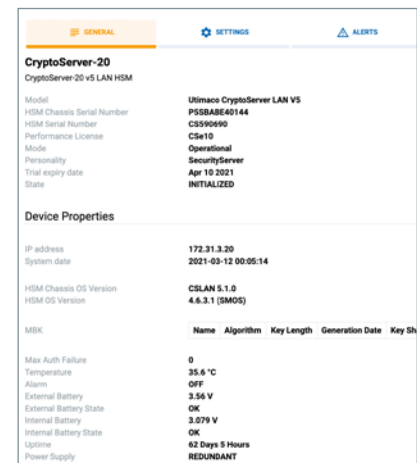
Monitor HSMs at a group level or identify the HSM with the most activities via an easy to follow HSM utilization graph. Our most recent release of u.trust 360 offers even more granular graphs with added data points, to increase precision and exactitude. A device maps has also been added to create a blueprint of your entire cryptographic real estate.



HSM CPU Utilization

Compliance Reporting

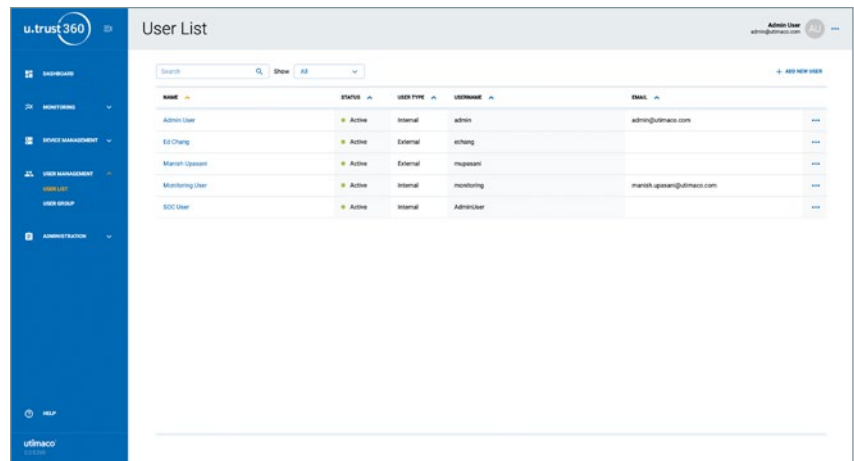
Easy reporting template.



Device Report

Role-based Access Control Model

Customized user groups to implement granular controls to implement granular control of the HSMs being managed. Import users from LDAP store or manage locally.



u.trust 360 User Management



Physical security and specifications

- **Appliance security**
Rack-mountable (1U), physically fortified, double-locking bezel, Medeco pick-resistant locks
- **Electrical security**
Dual redundant power supplies, out-of-range temperature and voltage detection
- **Controls**
Power on/off switch, unit ID switch, LCD control panel
- **Dimensions (WxDxH)**
19 x 26 x 1.75 in
(48.26 x 66.04 x 4.45 cm)
- **Weight**
25 lb (11.3 kg)

Connectivity

- **Communications ethernet**
TCP/IP, TLS 1.2 (only)
- **Connection**
10/100/1000BASE-T (RJ45) auto-sensing

Electrical and thermal characteristics

- **Rated input voltage**
100 to 127 VAC
200 to 240 VAC
- **Rated input current**
5 A – 3 A at 200 VAC
- **Rated input frequency**
50 Hz to 60 Hz
- **Rated input power**
350 W at 200 VAC
- **BTUs per hour**
1195 at 100 VAC
1195 at 200 VAC
- **Rated steady-state power**
250 W at 100 VAC
250 W at 200 VAC
- **Maximum peak power**
400 W at 100 VAC (3 sec.)

Operating environment

- **Operating temperature**
0°C to 40°C (32°F to 104°F)
- **Operating relative humidity**
5% to 95%, non-condensing

Certification/compliance

- **Safety**
UL/CUL, CE, TUV, BIS, BSMI, SII
- **Emissions**
FCC Class B, VCCI, BSMI, C-Tick, IC, KCC
- **Environmental**
RoHS, REACH

u.trust 360 Platform Available On-Prem, Virtually and In the Cloud



- **u.trust 360 appliance**

Add to your network by simply configuring network options before use.

- **u.trust 360 software**

u.trust 360 can grow with your business. You are no longer tied to hardware since UTIMACO offers a virtual appliance architecture to install on your

choice of hypervisor powered by Docker containers.

- **Cloud-Ready**

Provide a centralized HSM monitoring service to your internal customers as u.trust.360 can monitor multiple HSMs and domains.



Get
a fully
functional
30 day
trial!



Save time and reduce costs with a UTIMACO hosted PoC to learn how to safeguard your data against threats and address compliance

UTIMACO supports remote access to a test system for evaluation purposes. This is the quick and easy way to experience the UI and feature set, with neither setup nor dedicated internal systems required. Download the fully functional 30 day trial version at support.hsm.utimaco.com

For more details, email hsm@utimaco.com.

About UTIMACO

UTIMACO is a global platform provider of trusted Cybersecurity and Compliance solutions and services with headquarters in Aachen (Germany) and Campbell, CA (USA).

UTIMACO develops on-premises and cloud-based hardware security modules, solutions for key management, data protection and identity management as well as data intelligence solutions for regulated critical infrastructures and Public Warning Systems. UTIMACO is one of the world's leading manufacturers in its key market segments.

500+ employees around the globe create innovative solutions and services to protect data, identities and communication networks with responsibility for global customers and citizens. Customers and partners in many different industries value the reliability and long-term investment security of UTIMACO's high-security products and solutions.

Find out more on utimaco.com



Headquarters Aachen, Germany



Headquarters Campbell, USA



Contact us



EMEA

UTIMACO IS GmbH

📍 Germanusstrasse 4
52080 Aachen,
Germany

☎ +49 241 1696 200

✉ hsm@utimaco.com

Americas

UTIMACO Inc.

📍 900 E Hamilton Ave., Suite 400
Campbell, CA 95008,
USA

☎ +1 844 UTIMACO

✉ hsm@utimaco.com

APAC

UTIMACO IS Pte Limited

📍 6 Temasek Boulevard
#23-04 Suntec Tower Four
Singapore 038986

☎ +65 6993 8918

✉ hsm@utimaco.com

For more information about UTIMACO® HSM products, please visit:

utimaco.com

© UTIMACO IS GmbH 08/22 – Version 2.0

UTIMACO® is a trademark of UTIMACO GmbH. All other named trademarks are trademarks of the particular copyright holder. All rights reserved. Specifications are subject to change without notice.

Creating Trust in
the Digital Society

utimaco®